

## Round Towers GAA Club

### Site Description:

Address	~Area (ha)	Designations	Elevation	Teagasc Soil Type
22 Monastery Road, Clondalkin, Dublin 22.	3.8	None	81m	1000x: Fine loamy drift with limestones

The grounds of Round Towers GAA club is located in the southeast of Clondalkin on the site of an old quarry. The grounds are elevated in the local landscape and Leyland treelines were planted around the perimeter for shelter and screening purposes. Two of these treelines on the northern and western boundaries around the main pitch are well set in from the perimeter fence lines. There is wide grass verges throughout not used for sporting purposes.



*View of the main pitch towards the northern boundary.*



*View of the proposed orchard area 2.1 and the Leyland treeline on the western boundary.*



*View of the proposed orchard 2.2*



*View of the space behind the Leyland treeline on the western boundary.*



*View of the potential planting area to the north western corner of the main pitch.*



*View of the space behind the Leyland treeline on the northern side of the main pitch proposed as planting area 2.3.*



*View of some of the grass verges in the car park.*



*View of the bank proposed as shelterbelt planting (2.4).*

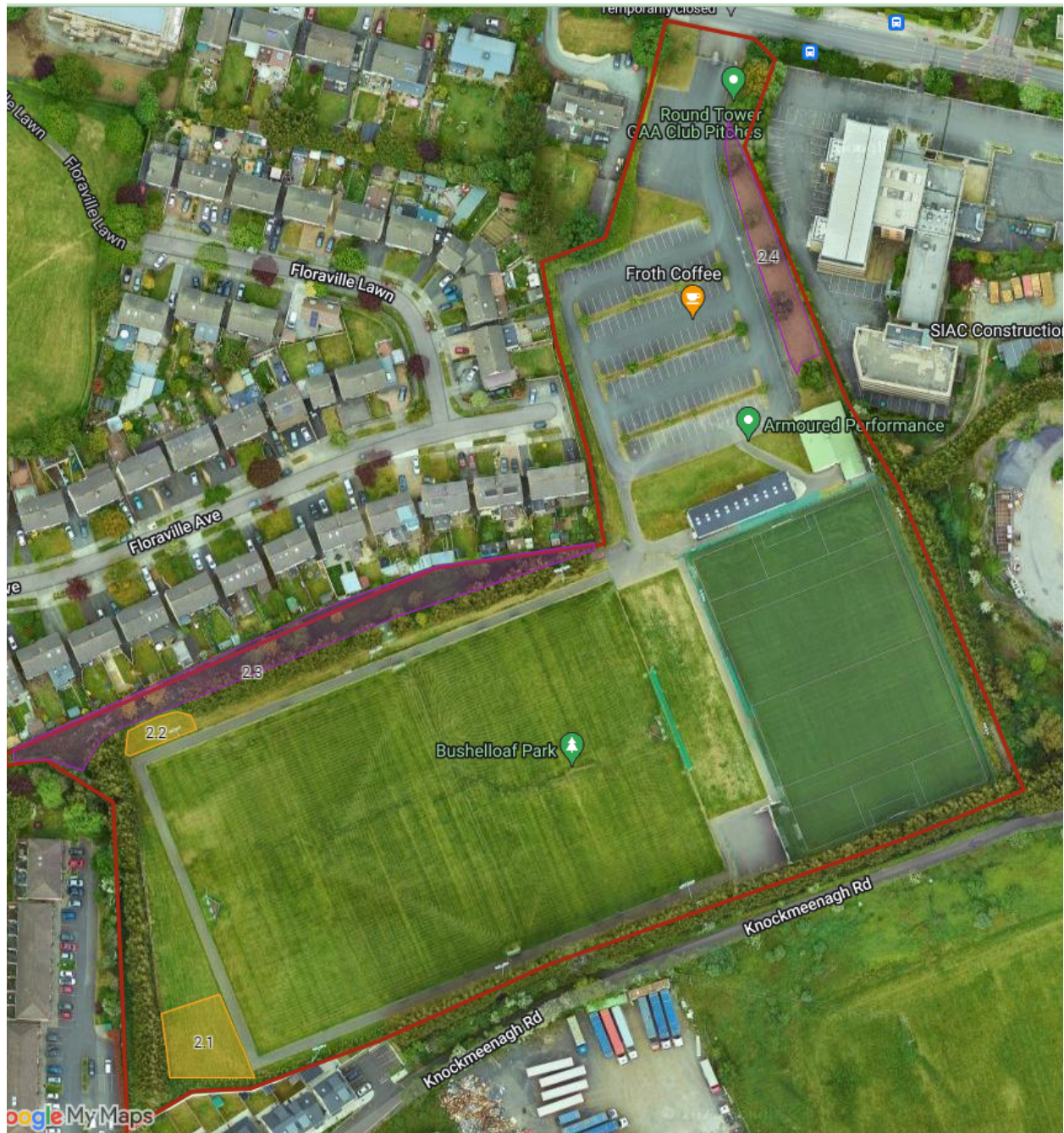
## Planting Proposals:

Sdasda

Ref No	Action Description	Area (ha) / Length (m)	Qty of Trees
2.1	Plant an orchard in the southwest corner of the site for use by the club members. <i>Species: Traditional Irish varieties of late season Apple trees, Pear trees, Hazelnut trees, and a mix of fruit bushes.</i>	0.048	8
2.2	Plant an orchard in the southwest corner of the site for use by the club members. <i>Species: Traditional Irish varieties of late season Apple trees, Pear trees, Hazelnut trees, and a mix of fruit bushes.</i>	0.015	5
2.3	Plant a native shelterbelt up to 10m width behind the existing Leyland treeline. Once established the Leyland treeline can be removed. <i>Species: Betula pubescens, Pinus sylvestris, Corylus avellana, Quercus robur, Sorbus aucuparia, Euonymus europaeus</i>	0.156	385
2.4	Plant a native shelterbelt up to 8m width on the eastern boundary of the entrance road. <i>Species: Betula pendula, Pinus sylvestris, Corylus avellana, Quercus robur, Sorbus aucuparia, Euonymus europaeus, Viburnum opulus, Crataegus monogyna, Prunus avium</i>	0.055	135
<b>Total</b>			

*Potential Future Planting:* There is the potential to create more suitable native shelterbelts in place of existing Leyland treelines around the grounds if the club wishes. This would require the removal of these treelines and replanting with a mix of native trees.

**Map:**



*Trees on the Land is a charity & not-for-profit project from the Green Economy Foundation  
Manch Estate, Ballineen, Co. Cork, Ireland. Charity Number: 15746.*